



Bulletin DXA05



DOMEX AXIAL

Models: DAE, DAS
Roof Ventilators
Direct Drive

MOVING YOUR WAY

CERTIFIED RATINGS

UL and CSA Certification

Models DAS14 through DAS18 are listed under UL705 (Electrical)

The Model DAS fans are listed by the Canadian Standards Association Testing Laboratory as approved.

Models DAE10 through DAE18 are ETL listed and comply with US705 (Electrical) Standards and CSA Std. C22.2, No 113.



Table of Contents

| | |
|---------------------------------------|---|
| Introduction | 1 |
| General Information | 2 |
| Features and Benefits | 2 |
| Options and Accessories | 3 |
| DAS - Dimensions and Performance Data | 4 |
| DAE - Dimensions and Performance Data | 5 |
| Sample Specifications | 6 |
| Limited Warranty | 7 |

FANSIZER®

Product Selection Software

FanSizer software allows you to select the best centrifugal or axial unit for your application. Input CFM and static pressure, and FanSizer will make the optimum selection. It allows you to complete job schedules which you can store, modify and print in seconds. Features include: on-line help, on-screen product drawings and dimensions, and complete text specifications. In addition, you can convert job schedules to ASCII code for use with other programs like word processing.

FANCAD®

Library of CAD Drawings

FanCad is a library of drawings for use with computer-aided design (CAD) systems. FanCad's pre-drawn details can save hours of drafting time. Included are all popular PennBarry fans and related items.

FanSizer and FanCad are registered trademarks.

Visit Our Web Site

Point your internet web browser to www.PennBarry.com for up-to-the-minute information including:

- On-line catalog
- List of nearest PennBarry representatives
- What's New
- HVAC "Hot Links"

©2005 PennBarry™ All rights reserved.

Following publication of this catalog changes may have been made in standard equipment, options and the like that would not be included.

We reserve the right to make changes at any time, without notice, to models, specifications, options, availability, etc.

This bulletin illustrates the appearance of PennBarry products at the time of publication and we reserve the right to make changes in design and construction at anytime without notice. Your local sales representative is the best source for current information.

General Information

Domex Axial Flow Ventilators



PennBarry axial flow ventilators provide excellent value for supply (DAS) and exhaust (DAE) applications in kitchens, office buildings, bakeries, laundries, factories, warehouses, foundries and locker rooms. They have an attractive low profile silhouette and operate efficiently at low and medium pressures.

Housings are durable, attractive spun aluminum with integral bird screens. Installation is easy and simple for roof or wall mount applications. Integral wiring conduit is standard.

Features and Benefits

- Fabricated of rust-free spun aluminum to provide weather resistant durability
- Rubber vibration mounts isolate motor, ensuring quiet operation
- Propellers constructed with die formed blades riveted to a steel hub
- Can be roof or wall mounted
- Standard bird screen
- Wire conduit provides a clear channel for electrical connections

Options and Accessories

Domex Axial Flow Ventilators

Mounting Pedestal

The mounting pedestal, available in aluminum, incorporates a removable 12" high access panel for easy inspection and service of motor operated backdraft dampers.

Hinged Sub-Base

Hinged sub-bases provide access to curb mounted dampers without significant increase (3 1/2") in the overall installed height. A rust proof hinge arrangement permits full access to the curb well for damper service. This accessory is available for use with most size exhausters on factory-built curbs or with an adapter for most field-built curbs.

Optional Finishes

Special coatings such as Epoxy, Aluma-Glass™ and Heresite, are available for applications involving corrosive conditions and/or other damaging influences.

Backdraft Dampers

Backdraft dampers are available for either gravity or motorized operation (motor kit optional). Dampers feature square galvanized steel frame, multi-leaf, roll formed aluminum blades with nylon bearings.

Safety Disconnect Switch



Standard safety disconnect switches include a wiring harness connected to the motor and terminating at a junction box under the motor dome. Final wiring to the switch is by field electrician. This on/off type switch is available for all ODP single and three phase motors.

Outdoor and explosion proof disconnect switches are generally too large to install under the motor dome, and will be shipped loose for field mounting and wiring.

Firestat Switch

The Firestat Switch automatically disconnects the unit when the temperature of the air being exhausted exceeds a preset rating.



Prefabricated Curbs

A variety of sizes of prefabricated roof curbs are available.



Galvanized steel unibeam curbs are the most popular. For a complete listing of all curb types and sizes available, please consult the latest PennBarry Curb brochure.

Speed Controls (selected direct drive models only)

The Lek-Trol™ unit allows adjustment of airflow. It can be installed under the motor dome which permits system balancing and eliminates unauthorized tampering of the setting. If wired to the unit from the building, the airflow may be adjusted easily by the occupants.

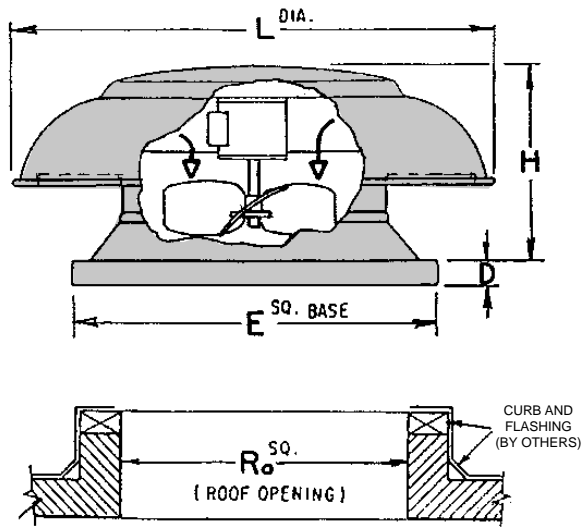


Internal Wiring

NEMA 3R wiring is available.

DAS - Dimensions and Performance Data

Domex Axial Supply Fan



"Field Built Curb Detail"

Dimensions

| MODEL | L | H | D | E | Ro |
|-------|---------|--------|---|----|----|
| DAS14 | 27 5/16 | 12 5/8 | 2 | 21 | 16 |
| DAS18 | 33 9/16 | 14 3/8 | 2 | 26 | 20 |

Performance Data

| MODEL | MOTOR HP | RPM | TS | STATIC PRESSURE (IN. WG.) | | | | |
|-------|----------|------|------|---------------------------|-------|-------|-------|-------|
| | | | | 0.000 | 0.125 | 0.250 | 0.375 | 0.500 |
| DAS14 | 1/6 | 1100 | 4030 | 1450 | 1174 | 904 | 670 | 439 |
| DAS18 | 1/3 | 1100 | 5180 | 2460 | 2220 | 1980 | 1639 | 1300 |

Sample Specifications

Domex Axial Flow Ventilators

SUPPLY - DAS

Direct drive Axial Roof supply fans, shall be Axial Domex DAS, supplied by PennBarry, Richardson, TX 75081.

Ventilator housings shall be heavy gauge spun aluminum construction with galvanized steel support members and shall be weatherproof, incorporating an integral weather baffle at the top of the air shaft. Bird Screen is included. An electrical conduit shall be furnished as an integral part of the housing to provide a clear channel for field wiring.

Statically and dynamically balanced propellers. Motors shall be Totally Enclosed (TE), continuous duty, and positively cooled.

Each fan shall be UL compliant.

EXHAUST - DAE

Direct drive Axial Roof exhaust fans, shall be Axial Domex DAE, supplied by PennBarry, Richardson, TX 75081.

Ventilator housings shall be heavy gauge spun aluminum construction with galvanized steel support members and shall be weatherproof, incorporating an integral weather baffle at the top of the air shaft. Bird Screen is included. An electrical conduit shall be furnished as an integral part of the housing to provide a clear channel for field wiring.

Statically and dynamically balanced propellers. Motors shall be Totally Enclosed (TE), continuous duty, and positively cooled.

Each fan shall be UL compliant.

One Year Limited Warranty

Domex Axial Flow Ventilators

What Products Are Covered

PennBarry Fans and Ventilators (each, a "PennBarry Product")

One Year Limited Warranty For PennBarry Products

PennBarry warrants to the original commercial purchaser that the PennBarry Products will be free from defects in material and workmanship for a period of one (1) year from the date of shipment.

Exclusive Remedy

PennBarry will, at its option, repair or replace (without removal or installation) the affected components of any defective PennBarry Product; repair or replace (without removal or installation) the entire defective PennBarry Product; or refund the invoice price of the PennBarry Product. In all cases, a reasonable time period must be allowed for warranty repairs to be completed.

What You Must Do

In order to make a claim under these warranties:

1. You must be the original commercial purchaser of the PennBarry Product.
2. You must promptly notify us, within the warranty period, of any defect and provide us with any substantiation that we may reasonably request.
3. The PennBarry Product must have been installed and maintained in accordance with good industry practice and any specific PennBarry recommendations.

Exclusions

These warranties do not cover defects caused by:

1. Improper design or operation of the system into which the PennBarry Product is incorporated.
2. Improper installation.
3. Accident, abuse or misuse.
4. Unreasonable use (including any use for non-commercial purposes, failure to provide reasonable and necessary maintenance as specified by PennBarry, misapplication and operation in excess of stated performance characteristics).
5. Components not manufactured by PennBarry.

Limitations

1. In all cases, PennBarry reserves the right to fully satisfy its obligations under the Limited Warranties by refunding the invoice price of the defective PennBarry Product (or, if the PennBarry Product has been discontinued, of the most nearly comparable current product).
2. PennBarry reserves the right to furnish a substitute or replacement component or product in the event a PennBarry Product or any component of the product is discontinued or otherwise unavailable.
3. PennBarry's only obligation with respect to components not manufactured by PennBarry shall be to pass through the warranty made by the manufacturer of the defective component.

General

The foregoing warranties are exclusive and in lieu of all other warranties except that of title, whether written, oral or implied, in fact or in law (including any warranty of merchantability or fitness for a particular purpose).

PennBarry hereby disclaims any liability for special, punitive, indirect, incidental or consequential damages, including without limitation lost profits or revenues, loss of use of equipment, cost of capital, cost of substitute products, facilities or services, downtime, shutdown or slowdown costs.

The remedies of the original commercial purchaser set forth herein are exclusive and the liability of PennBarry with respect to the PennBarry Products, whether in contract, tort, warranty, strict liability or other legal theory shall not exceed the invoice price charged by PennBarry to its customer for the affected PennBarry Product at the time the claim is made.

Inquiries regarding these warranties should be sent to: PennBarry, 1401 North Plano Road, Richardson, TX 75081.

Notes

Domex Axial Flow Ventilators

OTHER PENNBARRY PRODUCTS

CENTRIFUGAL PRODUCTS



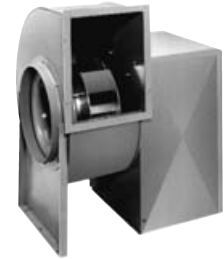
Domex
Centrifugal
Roof Exhausters



Fumex Fatrap
Kitchen Hood Centrifugal
Roof Exhausters



Zephyr
Ceiling and Inline Fans



Dynamo
Centrifugal Blowers



Centrex Inliner
Centrifugal Inline Fans



LC Dynafan
Low Contour Centrifugal
Roof Exhausters

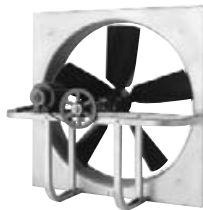


ESI
Efficient Silent
Inline Fan



Fume Exhaust
Curb Mounted
Centrifugal Fans

AXIAL / GRAVITY PRODUCTS



Breezeway
Propeller Wall Fans



HI-EX
Power Roof Ventilator



Tubeaxial
Inline Fans



Vaneaxial
Inline Fans



Powered Airette
Axial Roof Ventilators



Airette
Gravity Intake/Relief Hood



Domex Axial
Axial Roof Ventilators



Axcenrix
Bifurcator Fan

For more information contact your local PennBarry Sales
Manufacturer Representative or visit us at www.PennBarry.com